

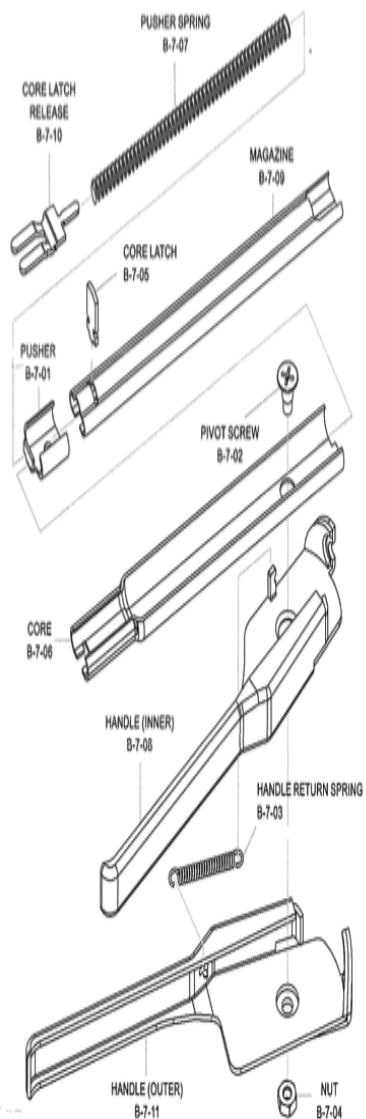
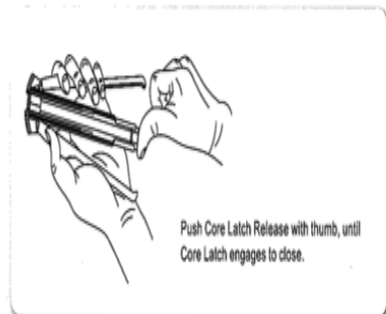
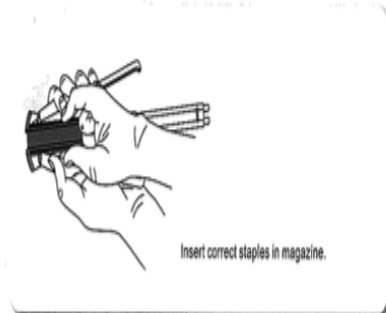
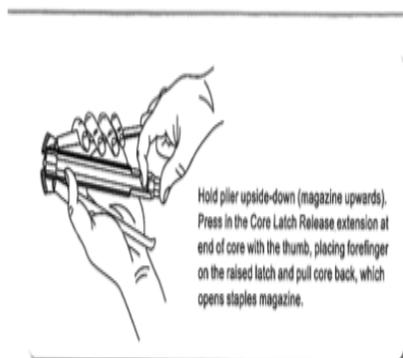


DIGITALBIRD – Tel. 051/750038 – Fax 051/7417231
 Via Lazio, 11 – 40069 Zola Predosa (BO)
E-mail: info@digitalbird.it – web site: www.digitalbird.it
 C.F.:BTTMHL70C07A944Q -P. IVA: 03254871209 – Registro Imprese di Bologna

MANUALE ANELLATRICE AP 7

<p>Per inserire i gancetti, premere le due leve all'estremità dell'anellatrice e, tirando la leva superiore, far scorrere verso l'esterno il corpo centrale.</p>	<p>Inserire i gancetti all'interno dell'anellatrice.</p>	<p>Riposizionare il cuore dell'anellatrice, precedentemente tolto, premendo con forza per il corretto fissaggio.</p>

COMPONENTI

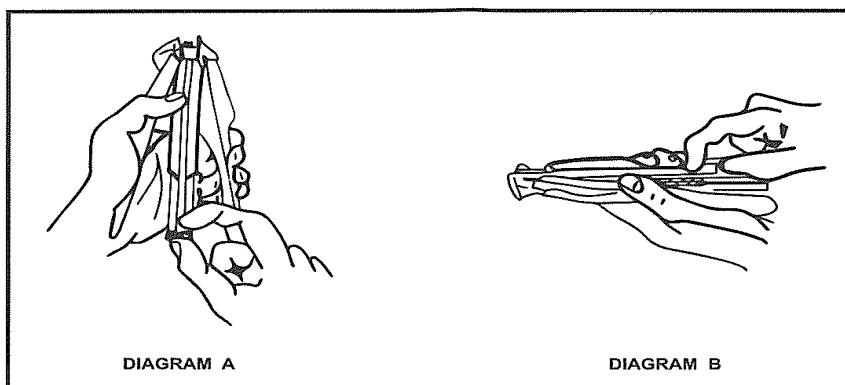




DIGITALBIRD – Tel. 051/750038 – Fax 051/7417231
Via Lazio, 11 – 40069 Zola Predosa (BO)
E-mail: info@digitalbird.it – web site: www.digitalbird.it
C.F.:BTMHL70C07A944Q -P. IVA: 03254871209 – Registro Imprese di Bologna

STANLEY BOSTITCH®

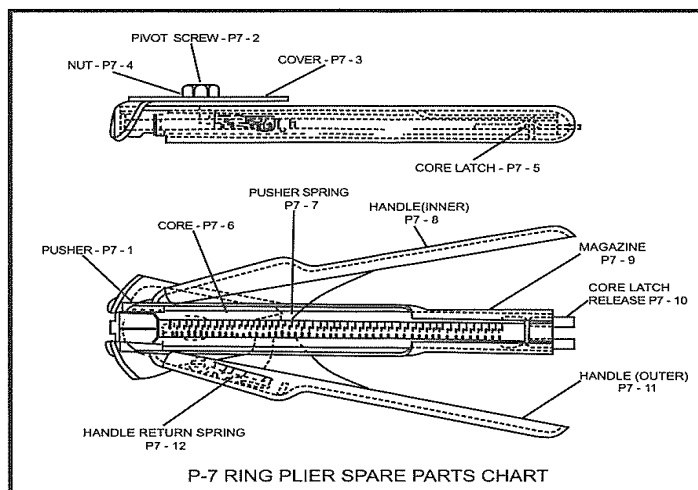
P7 Ring Plier



OPERATING INSTRUCTIONS

1. FASTENERS :This tool uses Ring Sr15 (RING 616G50) Type Ring Staples.

2.LOADING INSTRUCTIONS: For quick loading, retaining P7 Ring Plier in same hand, simply turn hand to bring magazine side upwards. Press in the latch release extension at end of core with the thumb of other hand, placing forefinger of free hand on the raised latch and pull core back (see Diagram A), which opens staple magazine. Insert staples in magazine, push core back toward nose of pliers (see Diagram B).



107209 REVA 4/98